

Since 2000



JPZ Consulting Bangladesh Ltd.

Planning Engineering & Management Consultant



**JPZ Consulting
(Bangladesh) Ltd.**

Company Profile

Corporate Office:

“Dream” 2/4, Level-5, Flat-5B,
Block-A, Mohammadpur Housing
Estate, Mirpur Road, Dhaka-1207,
Bangladesh,

Tel: +88-02-48111780,
+88-02-8142421

E-mail: info@jpzbd.com,
jpzbdLtd@gmail.com

Website: www.jpzbd.com

Other Office: Malaysia

17, Jalan Daud, Kampung Baru,
50300 Kuala Lumpur,
Wilayah Persekutuan Kuala Lumpur
Malaysia.

Tel. : 03-2691 3007/ 2691 3009

Fax: 03-2692 5624/ 2698 6239

Email: info@jpz.com.my

Website: <http://jpz.com.my>

Other Office: Nepal

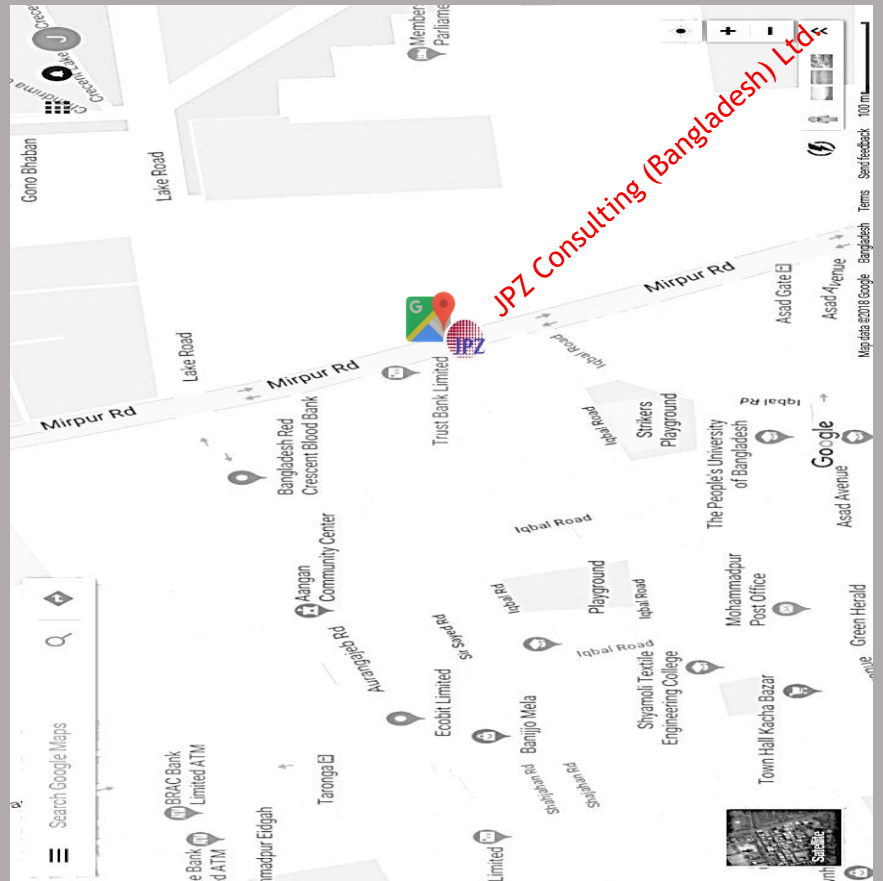
87, Kantipath, Kathmandu, Nepal

Tel.: 977-1-4229186/4226835

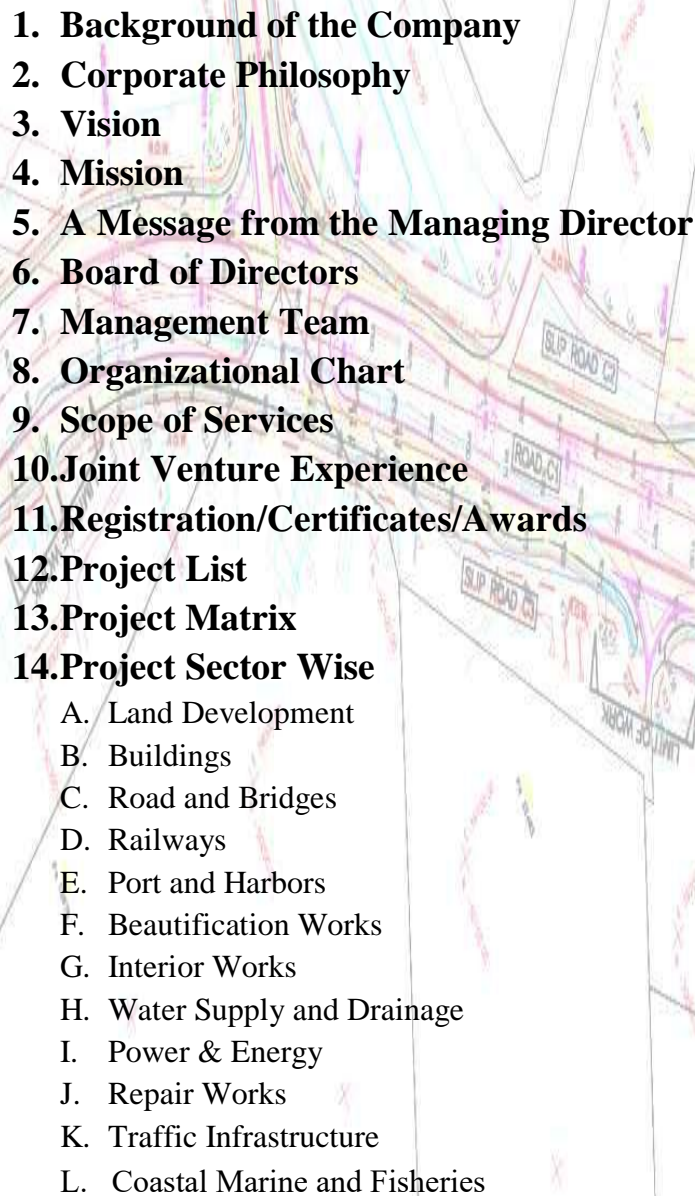
Fax: 977-1-4229185

Email: info@jpz.com.np

<http://www.jpz.com.np>



MYDIN

- 
- 1. Background of the Company**
 - 2. Corporate Philosophy**
 - 3. Vision**
 - 4. Mission**
 - 5. A Message from the Managing Director**
 - 6. Board of Directors**
 - 7. Management Team**
 - 8. Organizational Chart**
 - 9. Scope of Services**
 - 10. Joint Venture Experience**
 - 11. Registration/Certificates/Awards**
 - 12. Project List**
 - 13. Project Matrix**
 - 14. Project Sector Wise**
 - A. Land Development
 - B. Buildings
 - C. Road and Bridges
 - D. Railways
 - E. Port and Harbors
 - F. Beautification Works
 - G. Interior Works
 - H. Water Supply and Drainage
 - I. Power & Energy
 - J. Repair Works
 - K. Traffic Infrastructure
 - L. Coastal Marine and Fisheries

1. BACKGROUND OF THE COMPANY

JPZ Consulting (Bangladesh) Ltd. (JPZ) is a consulting firm with expertise in a wide range of disciplines such as architectural, civil, structural, electrical, mechanical engineering and management services.

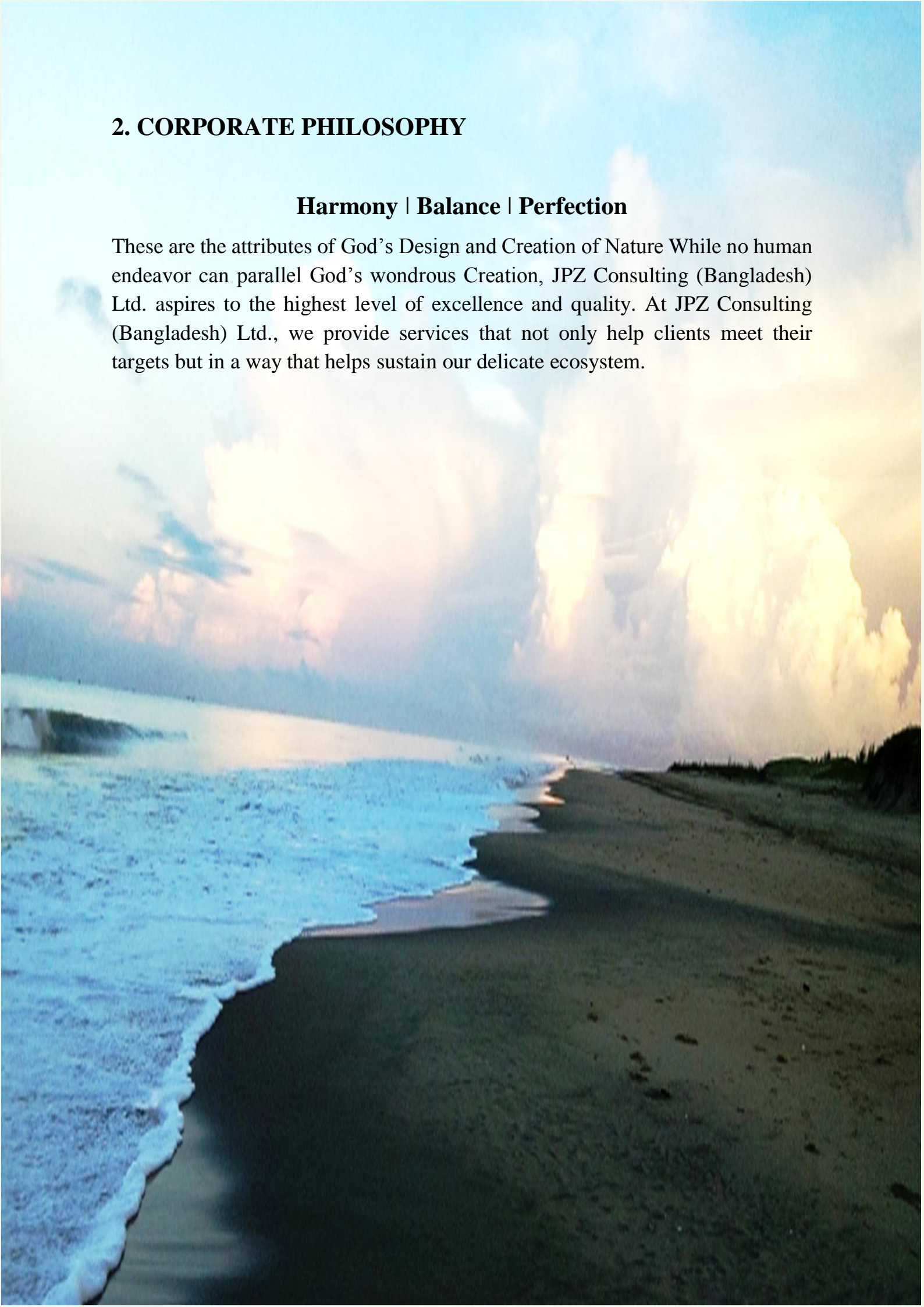
Established in 2000, the firm draws its competitive edge from this synergy of multi-disciplinary planners, architects and engineers with specialized skills and experience that enable the firm to offer high-quality study, design supervision, project management and technical advisory services to broad range of clients in the private and public sectors.

In order to provide project-need based services, JPZ has developed many user friendly computer software for the purpose of detailed engineering design, quantity surveying, project management and post-evaluation services for the infrastructure projects. In recognition of the growing demand of computerization, JPZ has established its own computer section. The computer section is continuously being upgraded to cope up with the over demanding professional services. JPZ also facilitates in house training facilities to upgrade the knowledge how of the personnel in computer section, with special emphasis on operation of various software, database management and management information system. The computer software (both proprietary/in-house developed) are being used extensively for planning, design, analysis and monitoring of building, road, bridge and infrastructure projects.

2. CORPORATE PHILOSOPHY

Harmony | Balance | Perfection

These are the attributes of God's Design and Creation of Nature While no human endeavor can parallel God's wondrous Creation, JPZ Consulting (Bangladesh) Ltd. aspires to the highest level of excellence and quality. At JPZ Consulting (Bangladesh) Ltd., we provide services that not only help clients meet their targets but in a way that helps sustain our delicate ecosystem.



3. VISION

JPZ goals for top ranked national as well as World-Class Status by providing technical knowledge based consultancy services for infrastructure development, collaborating with reputed national and international consulting firms, and contributing in nation building for a brighter future.



4. MISSION

JPZ upholds practice of Excellence Consultancy Services Ensuring valued Clients' desire through Building Self-Institutional Capacity, Creating Environment within Legal Framework and Policy adaptation, tapping potential human resources, empowering corporate culture, and recommending Best Practices of Professional Judgement.



5. A MESSAGE FROM THE MANAGING DIRECTOR

JPZ Consulting (Bangladesh) Ltd. started in 2000 with a handful of engineers and big aspirations.

Today, with more than 18 years of experience and a staff force of about 65



personnel, JPZ Bangladesh is continuously striving to improve the technical capabilities of its people and upgrading its systems and procedures to provide better service to its clients through the acquisition of productivity tools and the fostering of a corporate culture based on excellence.

Over the years JPZ Bangladesh has been entrusted with helping the growth of the nation through diverse services, including master plans and policy-related studies, in a wide spectrum of engineering fields such as transportation, roads and highways, water resources and water supply, residential, commercial and industrial development, mechanical and electrical engineering.

We always would like to thank valued clients in both the public and private sectors for giving us the opportunity to provide them with our services, enabling us to grow to our present stature. It is hoped that such support will continue in the future and that the new millennium will usher in more existing and challenging opportunities for the firm.

Together with our clients, JPZ Bangladesh will continue its efforts in building up the essential infrastructures for the benefit of future generations as we head towards a nation of self-reliance in fulfilling the aspirations of Vision of middle income country by 2021 and beyond.



6. BOARD OF DIRECTORS



Managing Director



Chairman & Director

JPZ is a Private Limited Company comprising the Board of Directors, ably supported by the Advisors, Associates and experts of various disciplines of high level.

The technical organization structure of the firm is managed by the partners, who are responsible to clients for projects in their own field of competence and combine with other skills in multi-disciplinary teams as necessary. In this manner the firm assumes personal responsibility and coordinate services for its full range of skills and all its areas of representation.

Name : Dr. Md. Anwarul Mustafa, PEng.

Nationality: Bangladeshi

Qualification: Ph.D. (Structural Engg.), M. Sc. (Structural Engg.),

B.Sc. (Civil Engg)

Position held: Managing Director

Name : Umme Kulsum

Nationality: Bangladeshi

Qualification: B. A. (Hons.), M.A.

Position held: Chairman & Director



7. MANAGEMENT TEAM

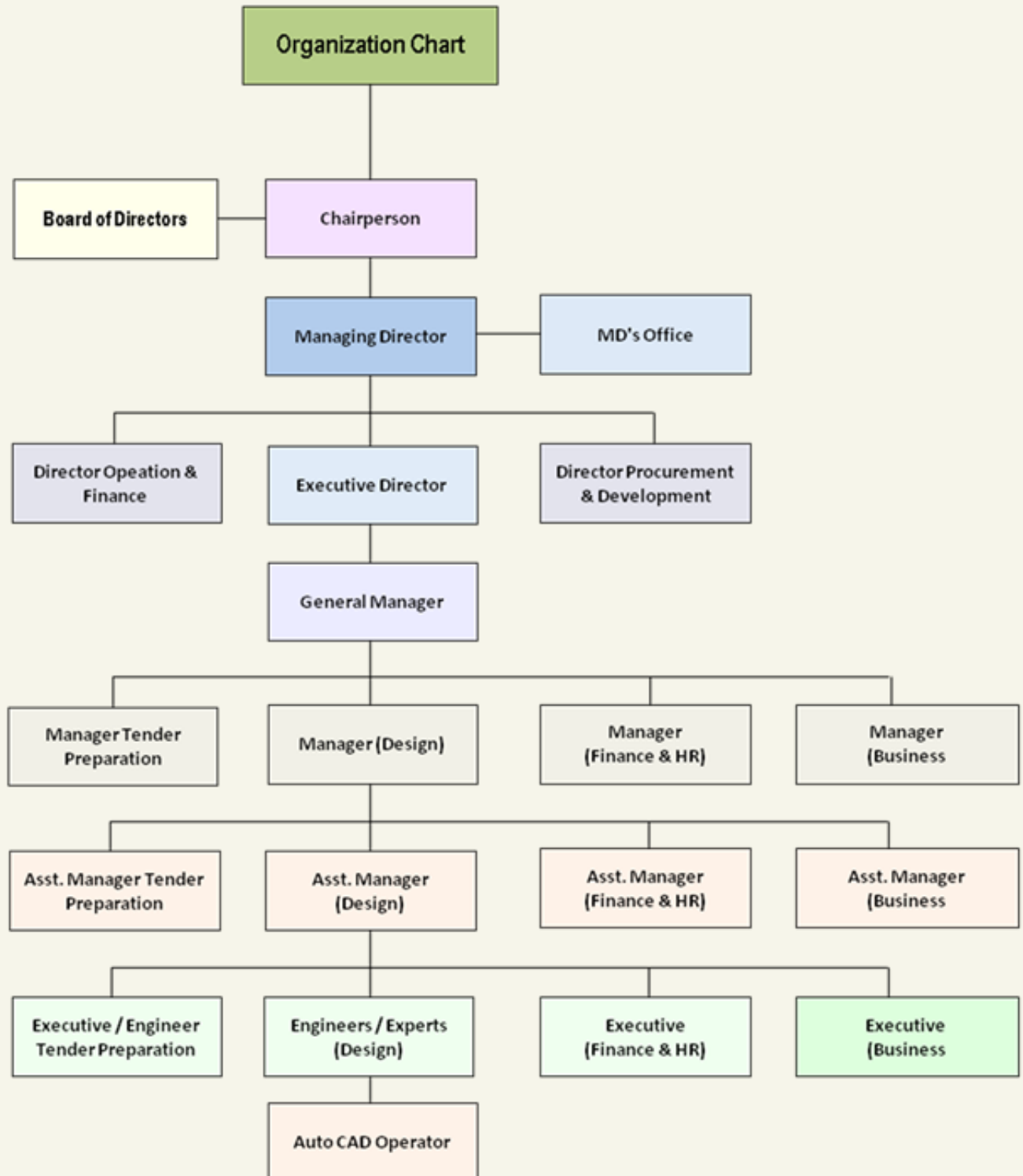
JPZ has well qualified and experienced professionals and its full time staff. It comprises Designers, Engineers of all disciplines, Planners, Computer Programmers, Quantity Surveyors, Economists, Cost Analyst, Project Management Specialists and Surveyor. The Directors and senior level experts comprising the technical and conceptual brain trust of the organization are highly qualified and well experienced professionals distinguished in their respective fields. JPZ is Associated with a number of foreign consultancy organizations and thus can draw upon the latest international expertise as and when required.



8. ORGANIZATIONAL CHART

JPZ Consulting Bangladesh Ltd.

Planning Engineering and Management Consultant



9. SCOPE OF SERVICES

The firm providing value to its clients in planning and engineering by clarifying their needs, challenging assumptions and developing solutions with the highest level of quality and performance to date. The firm has been entrusted by both the Govt. and other private companies to serve their purpose such as Feasibility Study, Preparation of Master Plan, Layout Plan and Detail Drawing and Design.

In addition to the conventional civil consulting services, we also offer operation & management services i.e., management capacity building, development of modern management systems and techniques as well as provision of technical transfer training.

JPZ offers architectural & engineering design and management services that cover a wide range of fields, which include:

Services	Fields
1. Baseline Surveys	❖ Project Concept and Planning
2. Engineering Surveys	❖ Transportation
3. Field Investigation and Testing	❖ Environmental Studies
4. Pre-Feasibility Studies	❖ Water Resources
5. Technical and Economic Feasibility Studies	❖ Water Supply
6. Detailed Design, Specification & BOQ	❖ Hydrology and Hydraulics
7. Cost Estimation, Tender Preparation and Documentation	❖ Coastal
8. Tender Appraisal	❖ Geotechnical
9. Contract Preparation and Administration	❖ Mechanical and Electrical
10. Value Engineering	❖ Bridges
11. Design and Safety Audit	❖ Dams
12. Construction Supervision and Monitoring	❖ Structural
13. Construction Management and Value Management	❖ Public Health
14. Rehabilitation Studies	❖ Land Development
15. Asset Management Studies	❖ Power and Control
	❖ Construction Supervision

10. JOINT VENTURE EXPERIENCE

JPZ has experience in working with other reputed firms has completed noticeable number of foreign and local projects which include:

LOCAL	INTERNATIONAL
❖ RIDDHI ARCHITECTS LTD.	❖ JURUTERA PERUNDING ZAABA (Malaysia)
❖ DESIGN PLANNING & MANAGEMENT CONSULTANTS LTD.	❖ TENCONSULTANTS LTD.
❖ VITTI STHAPATI BRINDA	❖ ANGEL LAZZARO & ASSOCIATES LTD.
❖ IRG DEVELOPMENT SERVICES LTD.	❖ HEWSON, UK
❖ STUDIO URBIS	❖ PCI, JAPAN
❖ SHATOTTO	❖ CAPITA, UK
❖ SARM ASSOCIATES LTD.	❖ HUNAN, CHINA
❖ FARHAT CONSULTANTING & ENGINEERS ASSOCIATION LTD.	❖ HYDRO, CHINA
❖ AVE ENGINEERING & CONSULTANTS LTD.	❖ CCCC, CHINA
❖ DEV CONSULTANTS LTD.	
❖ TECHNO CONSULT LTD.	
❖ ENVIRONMENTAL QUALITY MANAGEMENT SYSTEM LTD.	
❖ VISTARA ARCHITECTS LTD.	
❖ DESH-OPODESH LTD.	
❖ ENGINEERING & PLANNING CONSULTANTS LTD.	
❖ TARIK HASAN & ASSOCIATES LTD.	
❖ SPACE CONSULTANT LTD.	
❖ PROJECT BUILDERS LTD.	
❖ REZA CONSTRUCTION LTD.	

11. REGISTRATION/CERTIFICATES/AWARDS

- ❖ BANGLADESH ASSOCIATION CONSULTING ENGINEERS
- ❖ ASIAN DEVELOPMENT BANK
- ❖ WORLD BANK
- ❖ ISO 9001:2015

12. PROJECT LIST

S.L.	Description of the Project	Year
1.	Construction of 15 Storied High Rise Commercial Building (PBL Tower) at Gulshan-2, Dhaka	Jul-98
2.	Feasibility Study for Setting up Export Processing Zone in Sirajgonj & Saidpur, Rajshahi Division, Bangladesh	Nov-98
3.	Construction of 225m Bridge over Bangshi River at Hatubhanga on Gorai-Shakirpur Road under Mirzapur Thana, Tangail District.	Dec-98
4.	Construction of 15 Storied SABINCO Tower	Jan-99
5.	STL Testing Centre at Zirabo, Savar, Dhaka	Sep-99
6.	Consultancy services for Detail Design of Delivery Jetty at Mongla Cement Factory	Nov-99
7.	Feasibility study, Detailed design and Construction Supervision of Inland Container Depot cum Container Freight Station at CEPZ, Chittagong, Bangladesh.	Mar-00
8.	Feasibility Study for Setting up Inland Container Terminal at Lakhan Khola, Narayanganj	Mar-00
9.	22 Storied Commercial Complex UDAY TOWER with 4-level Basement at 57 & 57/A South Gulshan Commercial Area, Gulshan Avenue, Circle-1, Gulshan, Dhaka – 1212.	May-00
10.	Rectification works for 160-m long Jetty in the Pussur River at Mongla, Khulna, Bangladesh	Nov-00
11.	Delivery Jetty at Mongla Cement Factory.	Nov-00
12.	Construction of 308m long -4-lane composite Bridge (RCC/PC girder Bridge) over the surma river at Sylhet town.	2000
13.	Design Reviewing of 260m long 1st Dhaleshwari Bridge Under Road & Highway Department.	2000
14.	Design Reviewing of Construction of 521.30m Long (12x42.68m) P.C. Girder Bridge over River Shankha on 23rd K.M. Patiya-Anowara-Bashkhali-Toitong Road.	2000
15.	Development of 10 storied Independent University Campus at Bashundhara, Dhaka.	Mar-01
16.	Construction of 15 Storied MAHIN Tower Building Complex at Gulshan-2, Dhaka	Apr-01
17.	Relocation and Reconstruction of Jetty in Chittagong Sea Port.	Apr-01
18.	SANARC Complex at Tejgaon I/A, Dhaka	Jun-01

19.	Construction of CITI BANK Branch office at Gulshan-2, Dhaka.	Jun-02
20.	Construction of CITI BANK Branch office at Motijheel, Dhaka.	Jun-02
21.	Repair and Extension Work of Existing Two-storied Building at Plot-7, Road-2A, Sector-5, Uttara	Jun-02
22.	Construction of Port Facilities Including One Jetty Required for Teknaf Port. Chittagong, Bangladesh.	Jun-03
23.	10-Storied Academy Building including 2 nos. of basement named "Ahsanullah University of Science and Technology" at Dhaka.	Jul-03
24.	Toll Collection, Operation & Maintenance (T, O & M) Works of Bhairab Bridge and Associated Structures, Bangladesh.	Aug-03
25.	Construction of 160.205 m Bridge at Pearpur over Pandop River on Bakerganj – Gobindapur GC road under Bakerganj Upazilla, Barisal District, Bangladesh.	Aug-03
26.	Planning & Designing the Expansion, Modernization and Beautification of Dhaka, Narayanganj, Chandpur, Barisal and Khulna River Ports, Port Terminal and Adjacent	Oct-03
27.	Feasibility Study, Detailed Architectural and Engineering Design, Project Management and Construction Supervision for Construction of 20-Storied Family Planning Bhaban at Kawran Bazar, Dhaka	Apr-04
28.	Construction of 20 Storied Residential Tower Building for Police personnel at Mirpur Police Complex, Mirpur, Dhaka.	Apr-05
29.	Hypoid composite knit ltd., Saver	May-05
30	Construction of Teesta Bridge at 21st KM of Rangpur-Kurigram Road of Three Bridges Project under KFAED Assistance	Jan-06
31.	Detailed Design and Construction Supervision of 6-Storied Hasan General Hospital at Thakurgaon.	Jan-06
32	Techno-economic Feasibility study of a Deep-Sea Port in Bangladesh.	Jul-06
33	BIE Bhaban of Bangladesh Economic Association (BEA) at 4/C, Eskaton Garden Road, Dhaka,	Sep-06
34.	Construction of 1310m long Dapdapia Bridge on Barisal-Patuakhali Road, Barisal, Bangladesh.	Mar-07
35.	8-Storied NAVY Training Centre at Chittagong.	Jan-08
36.	Basement. Square Knit Fabrics Ltd. Valuka, Mymensingh	Feb-08
37.	Basement. World Trade Center, Agra bad, Chittagong	Feb-08
38.	Trafigard, Formake 629. Dhanmondi	Nov-08
39.	Basement. Grameen HQ, Basundhara Residensial Area.	Oct-08
40.	Vertical Extension of IDB Bhaban Shopping Complex, Sher-E-Bangla Nagar, Dhaka.	Jul-08
41.	Upgradation and Beautification of the Kamruzzaman Central Park at Rajshahi City corporation, Rajshahi. • Construction of steel arch bridge having single span of 36m long. • Construction of steel curve bridge 42m long integrated fixed supported bridge	Sep-09
42.	6-Storied Residential Building on Plot No. K-210, Dakshin Land Project, Dhaka	Dec-09

43.	Socio-Economic Study EIA & Detail Engineering Survey & Investigation and Engineering Design.	Jan-10
44.	Rehabilitation of Existing Meghna Bridge & Meghna-Gumti Bridge	Apr-10
45.	Bata, Tongi	Apr-10
46.	Preparation of Master Plan of 100 MW Gopalganj Power Plant	Jun-10
47.	Feasibility Study & Detail Design for Construction of Asulia-Birulia Link Road under Roads and Highway Department, Dhaka Road Circle, Dhaka.	Sep-10
48.	Falgu Polymer	Dec-10
49.	Feasibility Study & Detail Design of the "Amua Dhon River" and the adjoining areas for the proposed 180m Road Bridge over "Amua Dhon River" at Kathalia Upazila in Jhalakati District under RHD, Jhalakati Road Division, Jhalakati.	May-11
50.	Development of Gulshan-Banani-Baridhara Lake, Dhaka.	May-11
51.	Construction of Vertical Extension of City Bhaban 6th-10th floor & annex Building 1st -2nd floor with 10 Storied Foundation.	Aug-11
52.	Construction of two Link Road in Between Khulna- Jessore from MA Bari Sarak to City Bypass Road.	Dec-11
53.	Consultancy services for Construction and Supervision of Auditorium (22 shops at ground floor, one Auditorium at 1st floor and one Rest house at 2nd floor) under Raipura upazila, Dist. Narsingdi.	Feb-12
54.	Consultancy Service for Planning, Designing & Supervision for construction of Dormitory & Guest House at saha Mokhdum R/A; Police Barrack at Office premises, Bangladesh Bank, Rajshahi and Guest House at Rupsha Officer's Quarters, Bangladesh Bank Khulna.	Apr-12
55.	Detailed Architectural and Structural Design, including Top Supervision of Construction of 10-Storied Residential Apartment Building including 01 Basement Floor at Gulshan Dhaka (Phase-I)	Jun-12
56.	Detailed Architectural and Structural Design, including Top Supervision of Construction of 10-Storied Residential Apartment Building including 01 Basement Floor at Gulshan Dhaka (Phase-II)	Jun-12
57.	Consultancy services for The Architectural and Engineering Consulting Services for Construction of 4 Storied Market cum Commercial Complex at Upazilla of Sreemangal.	Jun-12
58.	The Architectural and Engineering Consulting Services for Construction of 4 Storied Market cum Commercial Complex at Upazilla of Kulaura	Jun-12
60.	Consultancy Services for the Updating / Preparation of the Storm Water Drainage Master Plan for Dhaka City, IDA Credit No. 4506-BD	Jul-12
61.	Detailed Design of Plumbing System including external disposal network for the project of Construction of Apartment Building for low and middle income of people at Sector-18 of Uttara Dhaka.	Aug-12
62.	Detailed Feasibility study for the project of construction of Apartment Building for low and middle income of people at Sector-18 of Uttara Dhaka."	Aug-12

63.	Preparation of Master Planning of Graveyard Including detail design of Arch Bridge and other associated infrastructure near National Martyred Moment at Rayerbazar Under Dhaka North City Corporation.	Aug-12
64.	Feasibility Study & Detail Design for Construction of R.C.C. Bridge on WASA Khal at Goider Tech, Adabor under Dhaka North City corporation.	Nov-12
65.	Selection of Consulting Firm for a) Structural Design b) Mechanical, Electrical & Plumbing Design & c) Project Management & Supervision of A Multi-Storied Building of ICB Head Office Bhaban at 11 Outer Circular Road, Razarbag, Dhaka-1000." Package –A) Structural Design	Jun-13
66.	Selection of Consulting Firm for a) Structural Design b) Mechanical, Electrical & Plumbing Design & c) Project Management & Supervision of A Multi-Storied Building of ICB Head Office Bhaban at 11 Outer Circular Road, Razarbag, Dhaka-1000." Package - C) Project Management and Supervision	Jun-13
67.	Consultancy Services for Detail Area Planning for the Existing Area at a depth of approximately 300 meter from the project Boundary line of Integrated Development of Hatirjheel area including Begunbari khal Project.	Jul-13
68.	Consultancy Services for Design and Supervision for Repair of the Cracks Developed and Construction of Wearing Course on the Deck of the Bangabandhu (Jamuna) Multipurpose Bridge (Tech/Jb-07/2006)	Aug-13
69.	Feasibility and Detailed Structural Design of Bridge over the river Shitalakhya (2nd Connection) in Narayanganj City.	Apr-14
70.	Consultancy Services for preparation of detailed technical, financial & socio economic feasibility study of " Construction of high rise Residential Apartment Building at Jhilmil Residential Area"	Jun-14
71.	Consultancy Services for Architectural Plan, Structural Design and Supervision for City Hall Construction of Annex Building and Design & Supervision of incomplete Work of Main Building & Annex Building for the RCC.	Jul-14
72.	Consultancy Services for Repair of Cracks inside the Box Gider and Strengthening of the Superstructure of the Banganbandhu Bridge.	Jul-15
73.	Feasibility Study, Detailed Structural Design and Construction Supervision of Flyover in Rajshahi City.	Aug-15
74.	Consultancy Services for The Preparation of Storm Water Management Databases for Dhaka City, Dhaka Water Supply and Sanitation Project (DWSSP).	Aug-15
75.	Consultancy Service for Structural Design and Supervision of Multi-storied Building of ICB Head Office, Rajarbag, Dhaka	Nov-12
76.	Consultancy Service for Management and Supervision of Multi-storied Building of ICB Head Office, Rajarbag, Dhaka	Nov-12
77.	Consultancy Services for Preparation of Engineering Plan & Detailed Structural Design & Supervision for Construction of 4 lane Flyover under the Project Construction of East-West Link Road starting from Rajshahi- Naogaon main Road to Mohanpur at Rajshahi Nator Road in Rajshahi City	Sep-15
78.	Consulting Services for Design and Supervision of Construction of 20 Storied Commercial (Multifunctional) cum Residential Building named as City Shapla Plaza & 25 Storied Commercial cum Residential Building named as City Padda Plaza in Narayanganj City Corporation	Dec-15

79.	Bridge over kaptai lake connecting bagachari to naniarchor bridge,RANGAMATI	May-16
80.	Consultancy Services for Construction of Modern Slaughter House at Hazaribagh and Kaptan Bazar	Aug-16
81.	Consultancy Services for Improvement of traffic management infrastructure (Intersection, Bus-stoppages/ Bus-bay, Left lane, Guard rail, Traffic Sign, Grill, Fencing etc.)	Aug-16
82.	Consultancy Services for Development of Park and Playground	Aug-16
83.	Hydrological and Morphological Study of 15 Bridges over Different River at Dhaka, Gopalganj, Rajbari, Kushtia, Shariatpur, Khulna, Bagerhat, Barishal, Patuakhali, and Jhalokhati Districts under LGED.	Sep-17
84.	Environment Friendly Master Plan for the "BEPZA Economic Zone"	Nov-17
85.	Aga Khan Academy	Nov-17
86.	Consultancy Services for " Construction of Foot over Bridge " DSCC	Dec-17
87.	Consultancy Services for Feasibility Study and Detail Design for Construction of Janalihat-CUET-Kaptai Dual Gauge Railway Link of Bangladesh Railway Chittagong.	Feb-18
88.	Chittagong Wasa	Mar-18
89.	Carrying out Classified Traffic Count Survey of RHD Road Network of Khulna, Barishal and Gopalganj Zone under the Package No-HDM/2018-19/SR-4	Jan-19
90.	Providing consultancy services regarding construction of 02-Nos Slipway each 2000 M.T. (Max) with winch, wheel house, slipway machineries, steel gangway jetty with RCC abutment including driving of 4 Nos spud, removing & cleaning the mud/clay/sandy deposit from river bed by dredging & manual earth cutting of surrounding area with all other incidental works & full time supervision for successful completion of the relevant works at	Oct-19
91.	Consultancy Services Improving Trading Acres Border and Chittagong port Authority and land port Authority. (CPA)	Nov-19
92.	Consulting Services for 1. Feasibility Study for construction of railway line from a. Chapainawabganj to Sonamasjid, b. Panchagarh to Banglabandha, c. Domar to Votemari via Jaldhaka and 2. Feasibility study, detailed design and preparation of bid documents for construction of new railway bridge on Tista River beside the existing railway bridge.	Feb-20
93.	Lebukhali-Rampur-Mirzagonj Link Road Project	Oct-20
94.	Preparation Architectural Plan & Detailed Engineering Design & Drawing including other incidental works for construction of 19 nos. of different structure, under the Project Integrated Urban Infrastructure Development in Rajshahi City.	May-21
95.	Consulting Services for Establishment of Modern Waste and Spilled Oil Management at Mongla Port, Bagerhat.	June-21

96.	Design Review and Construction Supervision Consultancy Services for Construction of Bridge at 17th km on the Kachua-Betagi-Patuakhali-Lohalia- Kalayia Road over the river Paira	June-21
97.	Construction Supervision & Management Sustainable Coastal and Marine Fisheries Project.(Phase-I,II)	August-21

13. PROJECT MATRIX

[illegible]

[illegible]

[illegible]

Feasibility Study & Detail Design for Construction of Asulia-Birulia Link Road under Roads and Highway Department, Dhaka Road Circle, Dhaka.	●			●											
Feasibility Study & Detail Design of the “Amua Dhon River” and the adjoining areas for the proposed 180m Road Bridge over “Amua Dhon River” at Kathalia Upazila in Jhalakati District under RHD, Jhalakati Road Division, Jhalakati.				●		●	●	●		●		●			
Development of Gulshan-Banani-Baridhara Lake, Dhaka.	●	●	●												
Construction of Vertical Extension of City Bhaban 6th-10th floor & annex Building 1st -2nd floor with 10 Storied Foundation.			●				●	●				●			
Construction of two Link Road in Between Khulna- Jessore from MA Bari Sarak to City Bypass Road.	●	●				●	●								
Consultancy services for Construction and Supervision of Auditorium (22 shops at ground floor, one Auditorium at 1st floor and one Rest house at 2nd floor) under Raipura upazila, Dist. Narsingdi.				●		●	●	●		●		●			
Consultancy Service for Planning, Designing & Supervision for construction of Dormitory & Guest House at saha Mokhdum R/A; Police Barrack at Office premises, Bangladesh Bank, Rajshahi and Guest House at Rupsha Officer's Quarters, Bangladesh Bank Khulna.				●								●			
Detailed Architectural and Structural Design, including Top Supervision of Construction of 10-Storied Residential Apartment Building including 01 Basement Floor at Gulshan Dhaka (Phase-I)											●	●			
Detailed Architectural and Structural Design, including Top Supervision of Construction of 10-Storied Residential Apartment Building including 01 Basement Floor at Gulshan Dhaka (Phase-II)			●	●			●	●				●	●		
Consultancy services for The Architectural and Engineering Consulting Services for Construction of 4 Storied Market cum Commercial Complex at Upazilla of Sreemangal.		●		●								●			

Consultancy Services for Detail Area Planning for the Existing Area at a depth of approximately 300 meter from the project Boundary line of Integrated Development of Hatirjheel area including Begunbari khal Project.			●	●			●	●				●	●		
Consultancy Services for Design and Supervision for Repair of the Cracks Developed and Construction of Wearing Course on the Deck of the Bangabandhu (Jamuna) Multipurpose Bridge (Tech/Jb-07/2006)					●	●	●	●		●		●			
Feasibility and Detailed Structural Design of Bridge over the river Shitalakhya (2nd Connection) in Narayanganj City.			●	●	●	●	●		●		●				
Consultancy Services for preparation of detailed technical, financial & socio economic feasibility study of “ Construction of high rise Residential Apartment Building at Jhilmil Residential Area”			●	●				●			●				
Consultancy Services forArchitectural Plan, Structural Design and Supervision for City Hall Construction of Annex Building and Design & Supervision of incomplete Work of Main Building & Annex Building for the RCC.											●				
Consultancy Services for Repair of Cracks inside the Box Gider and strengthening of the Superstructure of the Banganbandhu Bridge.						●					●				
Feasibility Study, Detailed Structural Design and Construction Supervision of Flyover in Rajshahi City.			●		●	●									
Consultancy Services for The Preparation of Storm Water Management Databases for Dhaka City, Dhaka Water Supply and Sanitation Project (DWSSP).								●			●				

14. PROJECT SECTOR WISE

A. LAND DEVELOPMENT

The firm's experience embraces all aspects of engineering from site development and infrastructure, commercial, residential, institutional, dams, bridges and pre-cast technology for the public and private sectors.

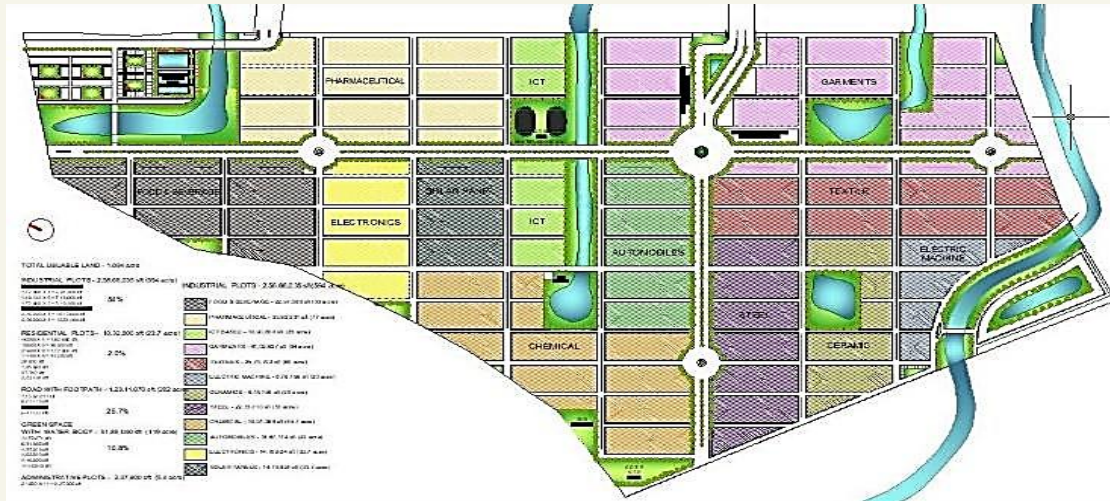
Elegance, efficiency and economy - the essential elements of land development engineering that forms the basis of works carried out at JPZ. Through the application of modern technology and experience, JPZ Bangladesh provides creative, and frequently non-traditional, solutions in the integration of client needs, land reclamation and soil improvement engineering requirements.



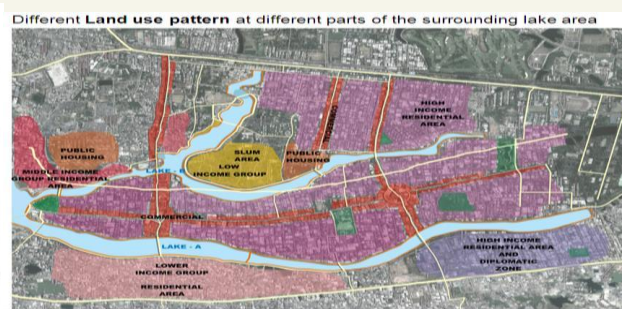
Deep-sea port at Sonadia channel of Moheshkhali in Cox's Bazar
Feasibility study and detailed design of infrastructures



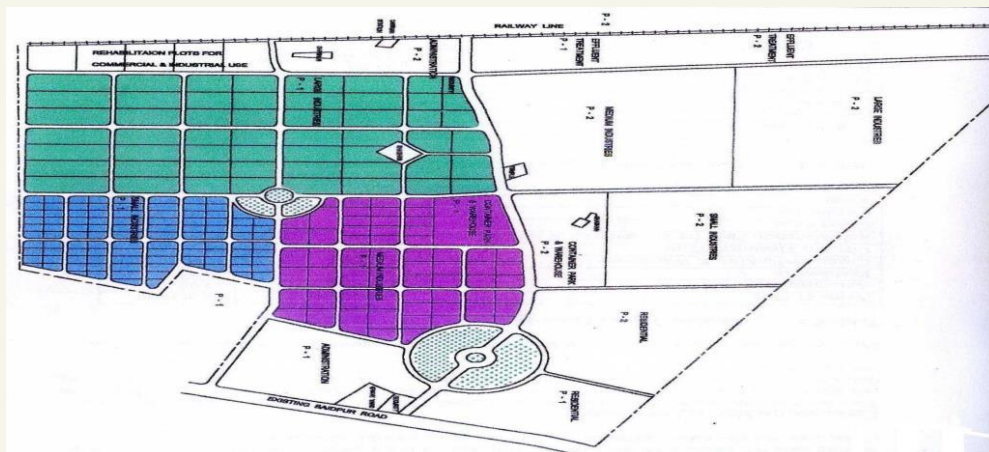
Maaster Plan & Detail Design Shaheed Kamruzzaman Central Park, KCP



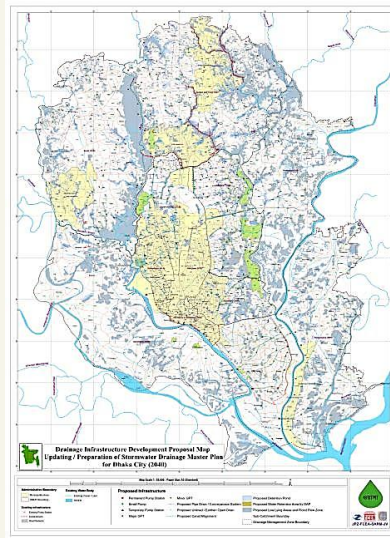
High Quality Environment friendly **Master Plan** for the “**BEPZA Economic Zone**” project under Mirsarai, Chittagong.



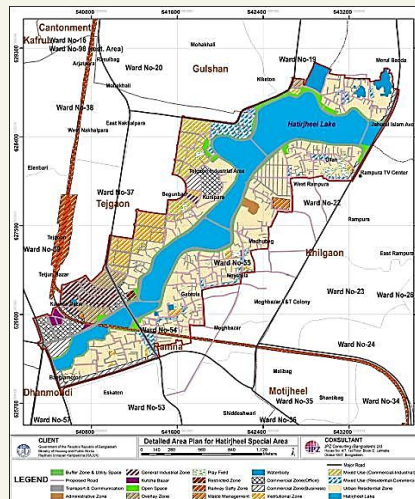
Development of Gulshan-Banani-Baridhara Lake, Dhaka.



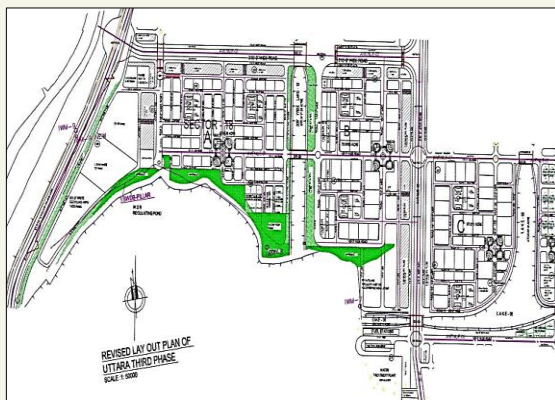
Export Processing Zone at Saidpur, Nilphamari Feasibility study and detailed design of infrastructures



Consultancy Services for the Updating / Preparation of the Storm Water Drainage Master Plan for Dhaka City,
 IDA Credit No. 4506-BD



Providing Consultancy Services for Detail Area Planning for the Existing Area at a Depth of Approximately 300 meter from the Project Boundary line of Integrated Development of Hatirjheel Area Including Begunbari Khal Project



Consultancy Services for Detailed Feasibility Study of Apartment Building for Low & Middle Income Group of People at Sector - 18 of Uttara, Dhaka

B. BUILDINGS

Architectural Sector is the traditional stronghold of JPZ, from the age traditional design; their emphasis is now on art-of-the day technology, having established the required facilities. JPZ Bangladesh provides consultancy services for planning & Design of office building, public buildings, commercial & retail, institutional complexes, industrial buildings, etc.

JPZ Bangladesh distinguishes itself in the area of architectural design by its revitalization of vernacular architecture. This use of local cultural designs that harmonize with the client's heritage and environment has performed the key role in bridging the elements of consulting works. JPZ Bangladesh also make full use of local materials to boost local pride and participation in our projects and thus maximize project benefits at the most reasonable cost extension work.

In providing its services, the firm's focus is on value engineering, often presenting, reviewing and comparing - together with architects and other consultants - various alternatives before arriving at the best solution for the client. An example is the redesign IDB Bhaban Shopping Complex involving at least three different structural concepts, giving a substantial saving of the structural cost while shortening the construction period.



Design & Construction supervision of
40 +4 Storied Investment
Corporation of Bangladesh (ICB)
Head Quarter



Independent University Campus at Bashundhara, Dhaka



Vertical Extension Work of IDB Bhaban Shopping Complex, Agargaon, Dhaka



SANARC Complex at Tejgaon I/A, Dhaka



Udoy Tower at Gulshan-1, Dhaka



Family Planning HQ, Karwanbazar, Dhaka



Construction of 15 Storied Hamid Tower Building Complex



Vertical Extension of City Bhaban
6th10th floor & annex Building 1st-
2nd floor with 10 Storied Foundation



10 (ten) Storied Residential
Apartment Building at Gulshan,
Dhaka (Phase - I)



10 (ten) Storied Residential
Apartment Building at Gulshan,
Dhaka (Phase - II)



Bangladesh Bank Dormitory & Guest House at Saha Mukdhum, Rajshahi



3 Storied Market cum Auditorium,under Raipura
upazila, Dist. Narsingdi.



Design & Construction supervision of
Moulovi bazaar Jela Porishad market



Guest House at Rupsha Officer's Quarters, Bangladesh Bank, Khulna.



Police Barrack at Office Premises, Bangladesh Bank, Rajshahi)



Dhaka North City Corporation Graveyard & Mosque



20 Storied City Hall Shapla



25 Storied Padma



Design & Construction supervision of 40 +4
 Storied Investment Corporation of Bangladesh
 (ICB) Head Quarter



Hazaribagh Slaughter House



Kaptanbazar Slaughter House



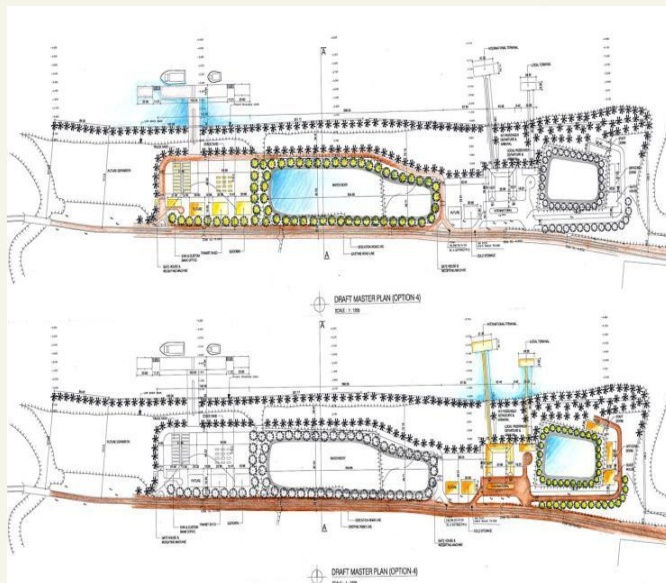
Preparation of Architectural Plan & Detailed Design & Drawing including other incidental works for construction of 19 nos. of different structure, under the Project integrated Urban Infrastructure Development in Rajshahi City Corporation

E. PORT AND HARBORS

The firm has capability of overall planning of major port extensions and large new port construction for every conceivable port type and purpose from general cargo ports to container ports, cargo terminals. It also provides planning of inland and ocean going transport systems among ports.

In Bangladesh, as a riverine country, ports play a vital role in Transportation of passenger and cargo, and most important, in the economic growth of the country as most of the import/export is carried out through different ports of the country. Recognizing its importance to the development and growth of a nation, this sector at JPZ has evolved and systematically grown

in complexity from the design of a handful of ports in Bangladesh. Some of the worthy mentioned projects are:



Masterplan of Teknaf Land Port at Teknaf,
Chittagong, Bangladesh

Techno-economic Feasibility Study of a Deep Sea Port in Bangladesh, Feasibility Study for Setting up Inland Container Terminal at Lakhon Khola, Narayanganj, Feasibility study & detailed design of Inland Container Depot cum Container Freight Station at CEPZ, Chittagong, Feasibility Study, Preparation of Master Plan, Layout Plan and Detail Drawing and Design of Port Facilities Including one Jetty Required for Teknaf Port. Chittagong, Bangladesh.

Planning & Designing the Expansion, Modernization and Beautification of Dhaka, Narayanganj, Chandpur, Barisal and Khulna River Ports, Port Terminal and Adjacent Areas. The firm was also engaged in detailed design and design evaluation for the jetty in Mongla port in Khulna for the Mongla Cement Factory.





Inland Container Depot Cum Container Freight at CEPZ, Chittagong



Deep-sea port at Sonadia channel of Moheshkhali in Cox's Bazar
Feasibility study and detailed design of infrastructures

C. ROAD AND BRIDGES

Transportation infrastructure, an important engine of growth that provides the vital connections that link people and their activities across a country as well as around the globe. Recognizing its importance to the development and growth of a nation, the transportation sector at JPZ has evolved and systematically grown in complexity from the design of rural road to the National highways in Bangladesh.

The firm provides value to its clients in Multi-Span-long bridge development planning and engineering by clarifying their needs, challenging assumptions and developing solutions with the highest level of quality and performance.



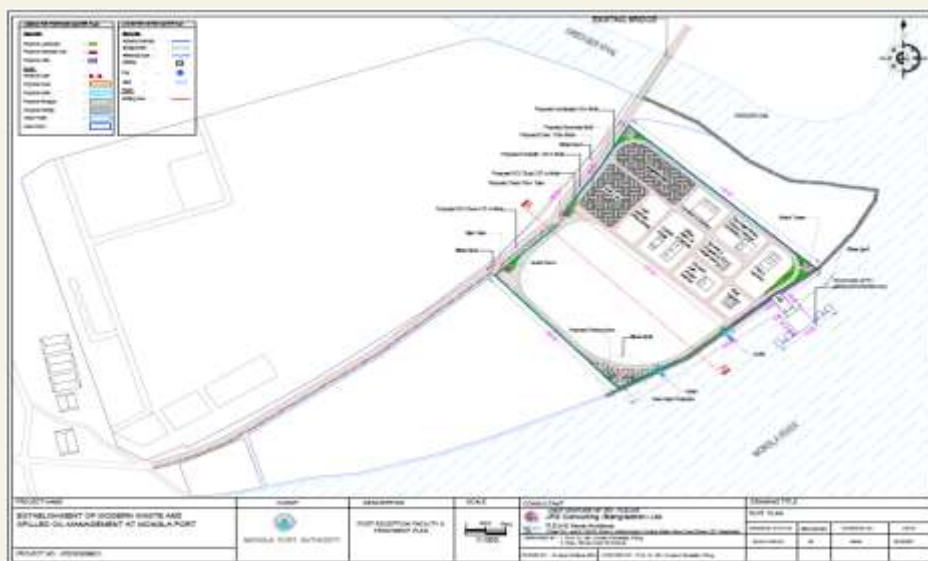
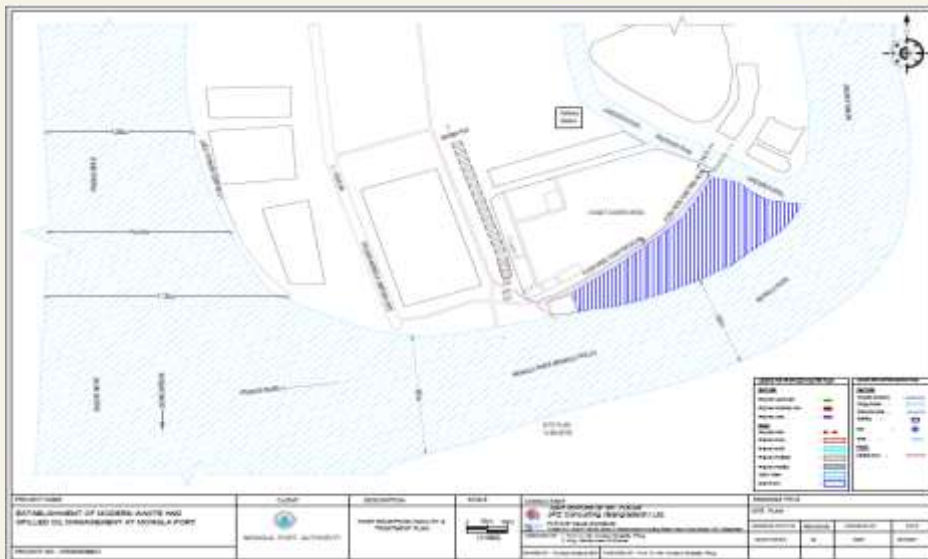
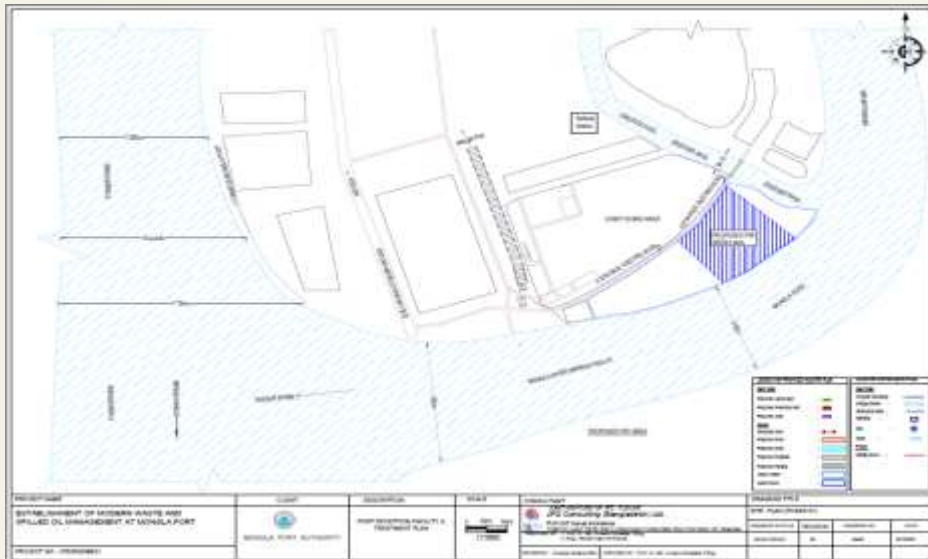
Proposed Shitalakhya Bridge (2nd Connection) in Narayanganj City



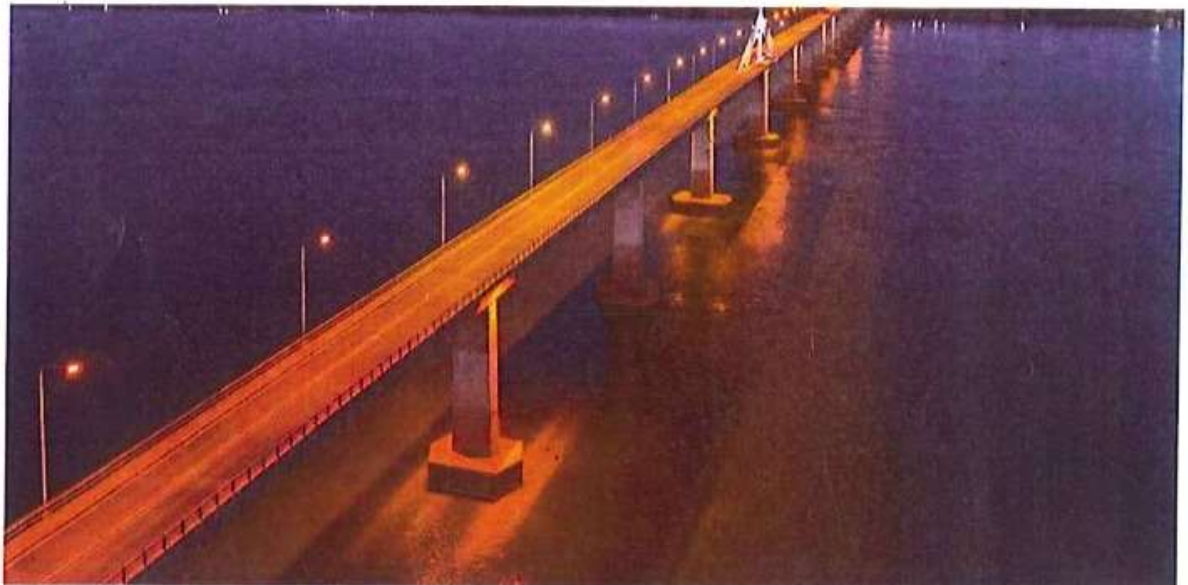
Pandop Bridge, Barisal, Bangladesh



Dapdapia Bridge, Barisal, Bangladesh



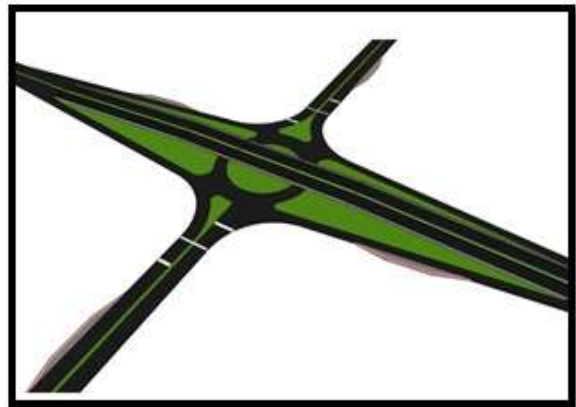
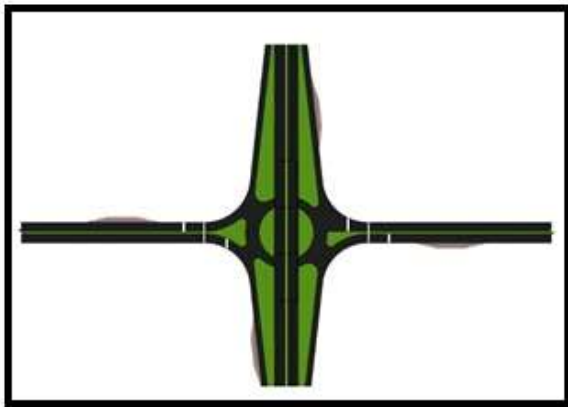
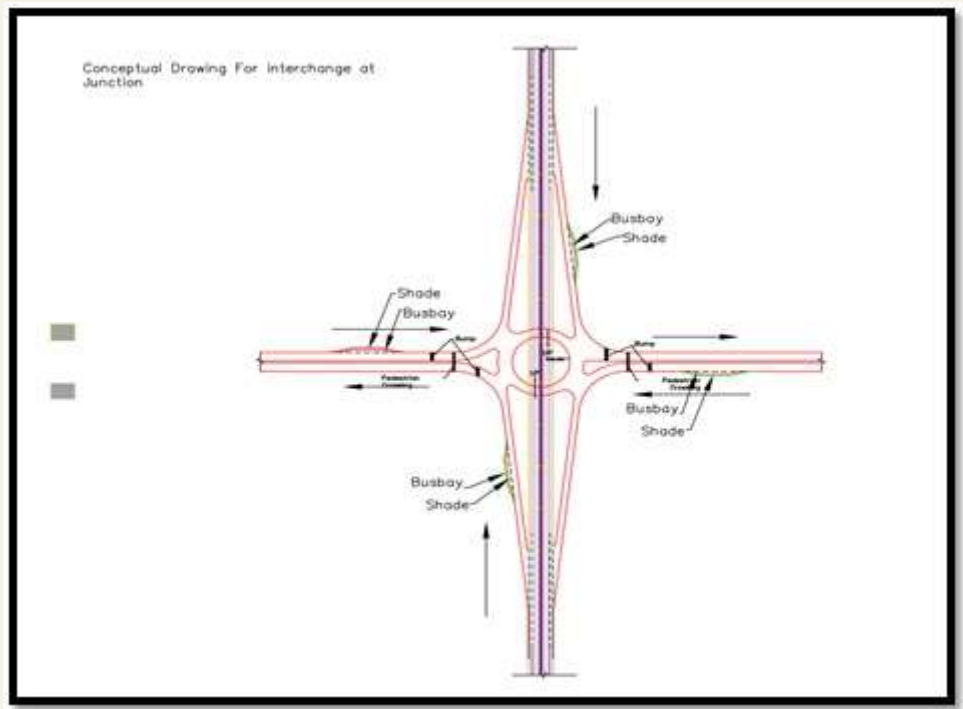
Consulting Services for Establishment of Modern Waste and Spilled Oil Management at Mongla Port, Bagerhat.



Design Review and Construction Supervision Consultancy Services for Construction of Bridge at 17th km on the Kachua-Betagi-Patuakhali-Lohalia-Kalayia Road over the river Paira



Lebukhali-Rampur-Mirzagonj Link Road Project



Consultancy Service for providing Technical Support on Works and Service Performed by Road Design and Safety Circle”.



Tista Bridge, Rangpur, Bangladesh



Repair of the Cracks Developed and Construction of Wearing Course on the Deck of Jamuna Multipurpose Bridge, Bangladesh



Toll Collection, Operation & Maintenance Works of Bhairab Bridge, Bangladesh



Design and Supervision for Rehabilitation of Existing Meghna & Mehna Gumoti Bridge, Bangladesh



Feasibility Study & Detail Design of the “Amua Dhon River” and the adjoining areas for the proposed 180m Road Bridge over “Amua Dhon River” at Kathalia Upazila in Jhalakati District under RHD, Jhalakati Road Division, Jhalakati



Construction of steel curve bridge 42m long integrated fixed supported bridge at Shaheed Kamruzzaman Central Park, KCP at Rajshahi City Corporation, Rajshahi



Construction of steel arch bridge having single span of 36m long bridge at Kamruzzaman Central Park at Rajshahi City Corporation, Rajshahi



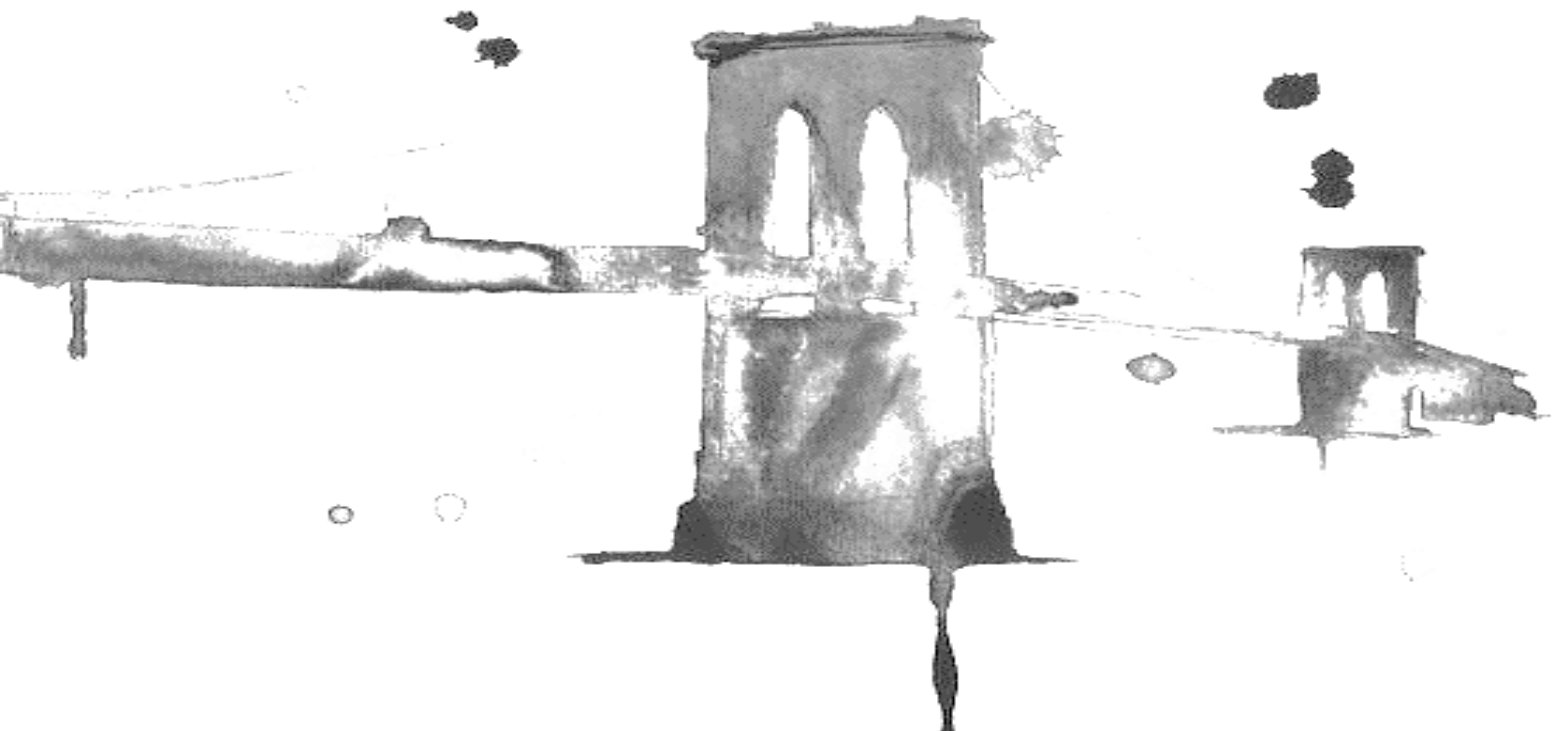
Feasibility and Detailed Structural Design of Bridge over the River Shitalakhya (2nd Connection) in Narayanganj City.



Construction of 30 m long PC Girder Bridge and (Ch. 0+000 to 6+181) Road from Bastuhara Main Road to City Bypass Road under Khulna



Construction of 500 m long PC Girder Bridge at Nanichar over Kaptai Lake



FLYOVER

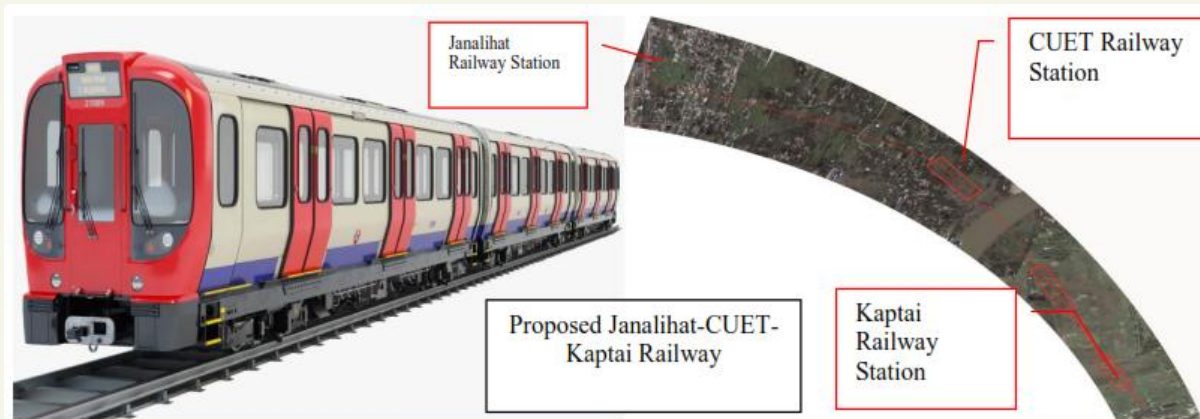


Consultancy Services for Construction of East –West Link Road starting from Rajshahi-Naogaon main Road to Mohanpur at Rajshahi Natore Road in Rajshahi City.



Consultancy Services for Construction of Overpass at Babubazar Nayabazar, DEMRA, Motsho bhaban, under Dhaka South City Corporation.

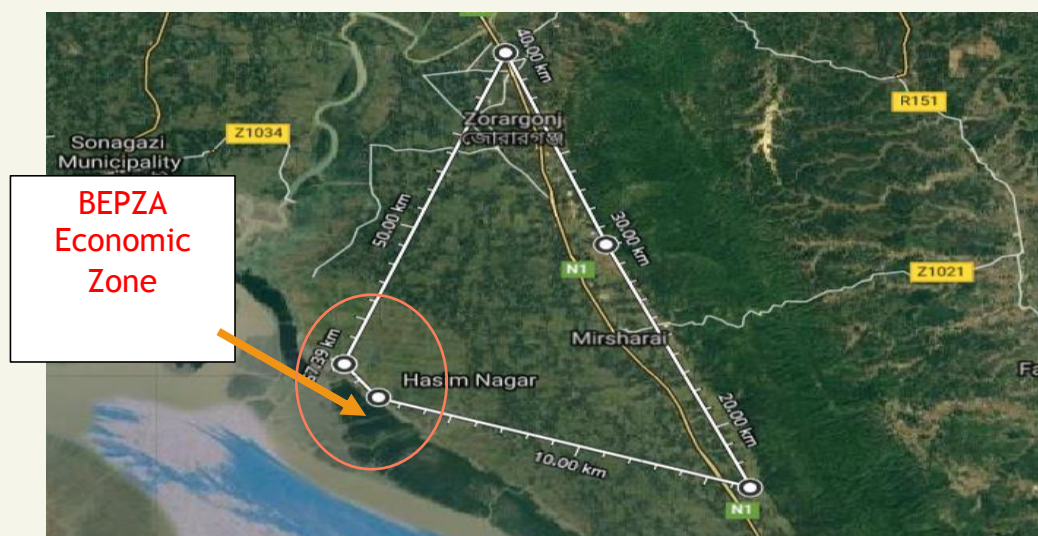
D. RAILWAY PROJECT



Consultancy Services for Feasibility Study and Detail Design for Construction of Janalihat-CUET-Kaptai Dual Gauge Railway Link



Consultancy Services for Repair of the Cracks Developed and Construction of Wearing Course on the Deck of the Jamuna Multipurpose Bridge (Tech/Jb-07/2006)



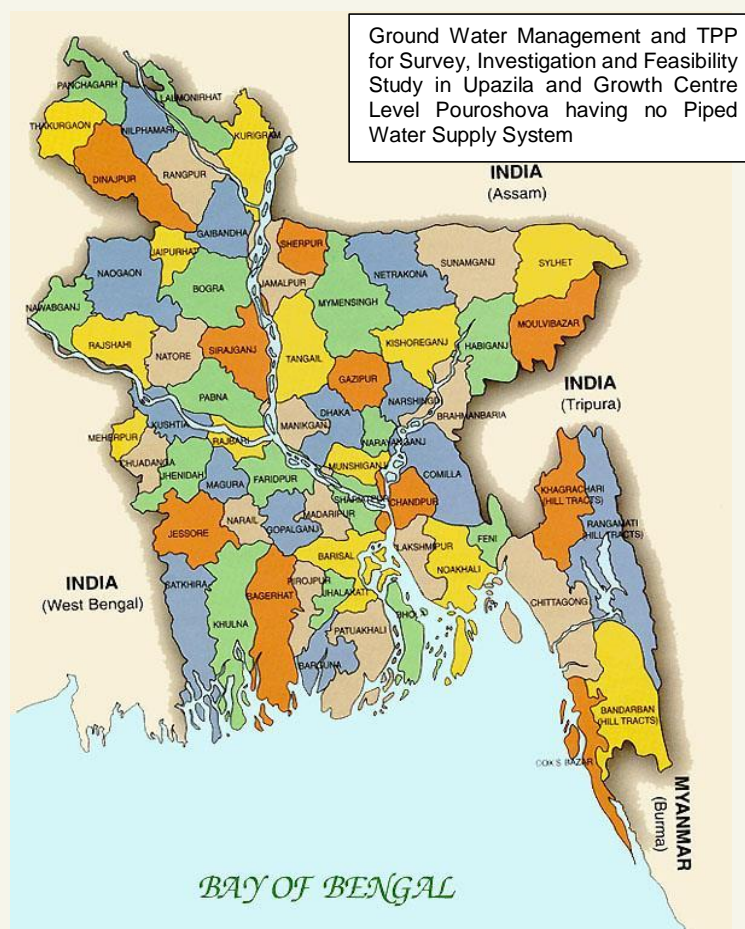
Feasibility Study of rail link for “BEPZA Economic Zone” project at Mirsarai, Chittagong. Under Bangladesh Export Processing Zone Authority

H. WATER SUPPLY AND DRAINAGE

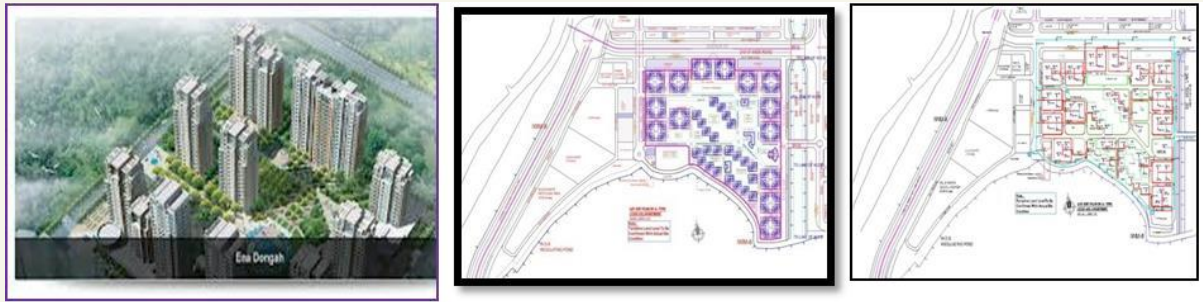
Planning and designing of water and sewerage treatment plants, water treatment and distribution, water supply and sewerage system, distribution of network to industrial and urban communication, operation and maintenance study, performance evaluation.



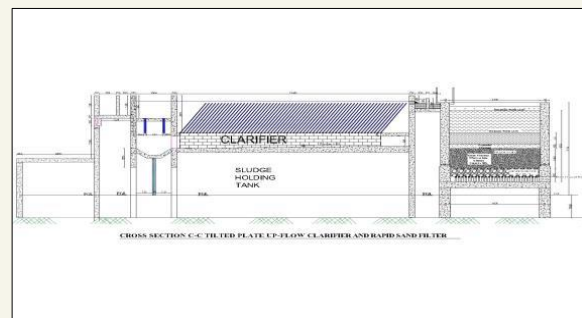
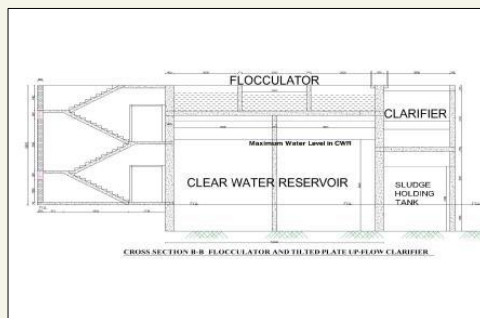
Distribution of Pourashavas



Ground Water Management and TPP for Survey, Investigation and Feasibility Study in Upazila and Growth Centre Level Pouroshova having no Piped Water Supply System



Consultancy Services for Detailed Design of Plumbing System including External Disposal Network for the Project of Construction of Apartment Building for Low and Middle Income of People at Sector – 18 of Uttara, Dhaka



Socio-Economic Study EIA & Detail Engineering Survey & Investigation and Engineering Design.

PARK & PLAYGROUND



Osmani Uddan

HAZARIBAGH PARK CUM PLAYGROUND

HAZARIBAGH, AREA : 4.9 Bigha
WARD 22



Enayetganj road
Park
Hazaribagh road

EXISTING CONDITION

1. Boundary Wall



2. Garbage Disposal



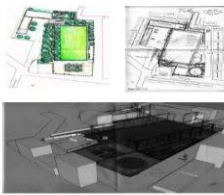
3. Community Hall



4. Active Playfield



CONCEPT



SUSTAINABILITY



LIST OF TREE

Summer blossom trees
Delonix Regia
Jacaranda tree
Butea Monosperma
Nyctanthes arbor-tristis
Terminalia Catappa
Ribachura

Fruit trees
Guava tree
Java apple tree
Burmese grapes
Spondias Mobin

PROPOSED DESIGN



Hazaribagh Park Cum Playground

PANTHAKUNJA PARK

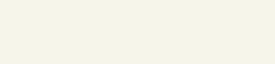
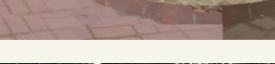
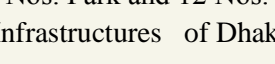
WARD NO: 21, AREA: 15.13 BIGHA



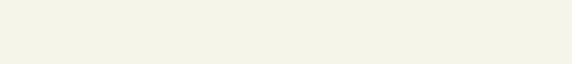
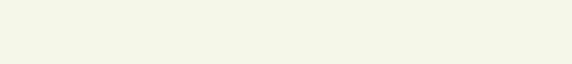
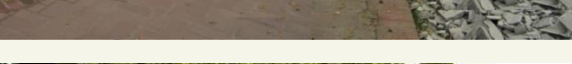
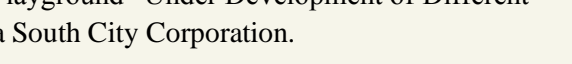
HATIRHEEL LAKE
SONARGAON HOTEL
PANTHAKUNJA PARK

IDEAS

1. Trimming all the tall trees which have a large dia of canopy will help to allow the natural daylight.
2. Installation of grass in a sustain method.
3. Footpath for common passers by.
4. Installation of tall light post to enlighten the park at night properly.
5. Turning the park into a gathering space for the city dwellers as well as a URBAN OASIS.



PROPOSED DESIGN



“Development of 19 Nos. Park and 12 Nos. Playground “Under Development of Different Infrastructures of Dhaka South City Corporation.



Development of Gulshan-Banani-Baridhara Lake, Dhaka.

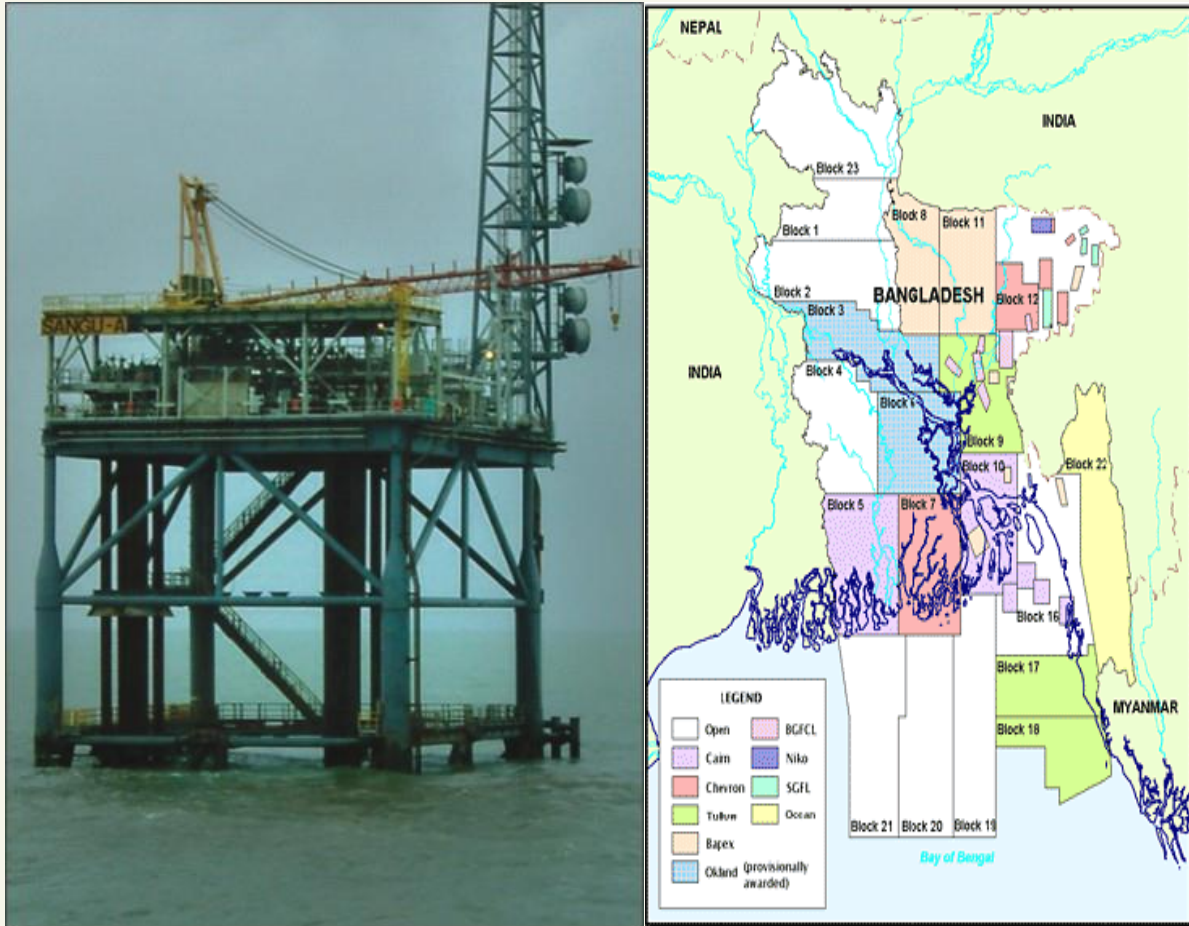
TRAFFIC INFRASTRUCTURE



Consultancy Services for “Improvement of Traffic Management Infrastructure” of Dhaka South City Corporation.

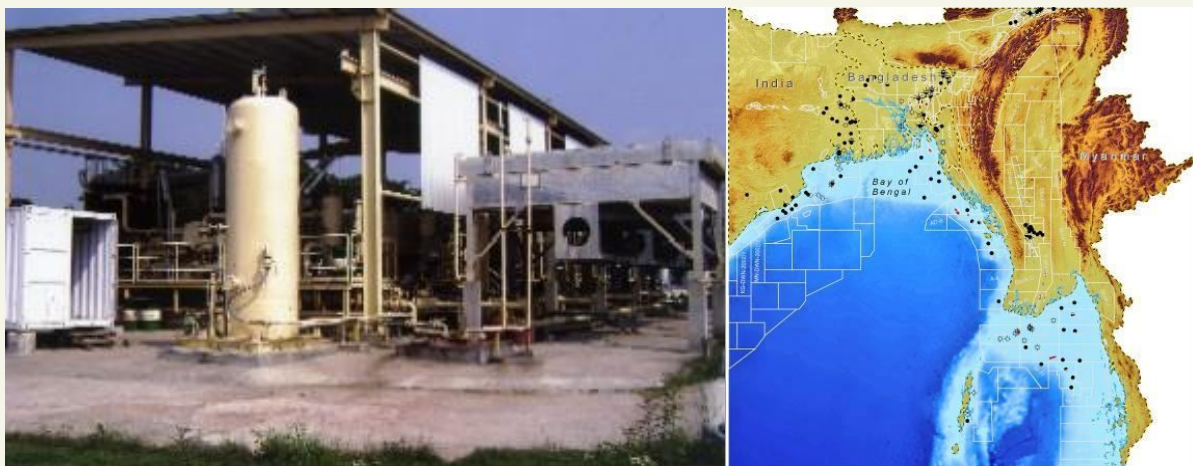
POWER AND ENERGY

Construction technique for Sand (Grout)/Gravel bags dumping in and around the area of Sangu Pipeline near Sangu Alpha Platform in the Bay of Bengal.



Sangu Gas Field

Design of Foundations for Gas Booster Compressor, Gas Recycle Skid and Air Receiver Skid for Construction of Gas Booster Compressor at Bakhrabad Gas Field



Bakharabad Gas Field

REPAIR WORKS

JPZ Consulting (Bangladesh) Ltd. (JPZ) is providing consultancy services in repair works of different projects of Vision for Development Ltd., a leading waterproofing company in Bangladesh.



Bata Factory, Dhamrai & Tongi



British Council



WORLD TRADE CENTER
CHITTAGON



Josher Airport



Kollol ZET Factory



Foy's lake Chittagong



Square Knit Fabrics Ltd., Valuka,
Mymanshingh



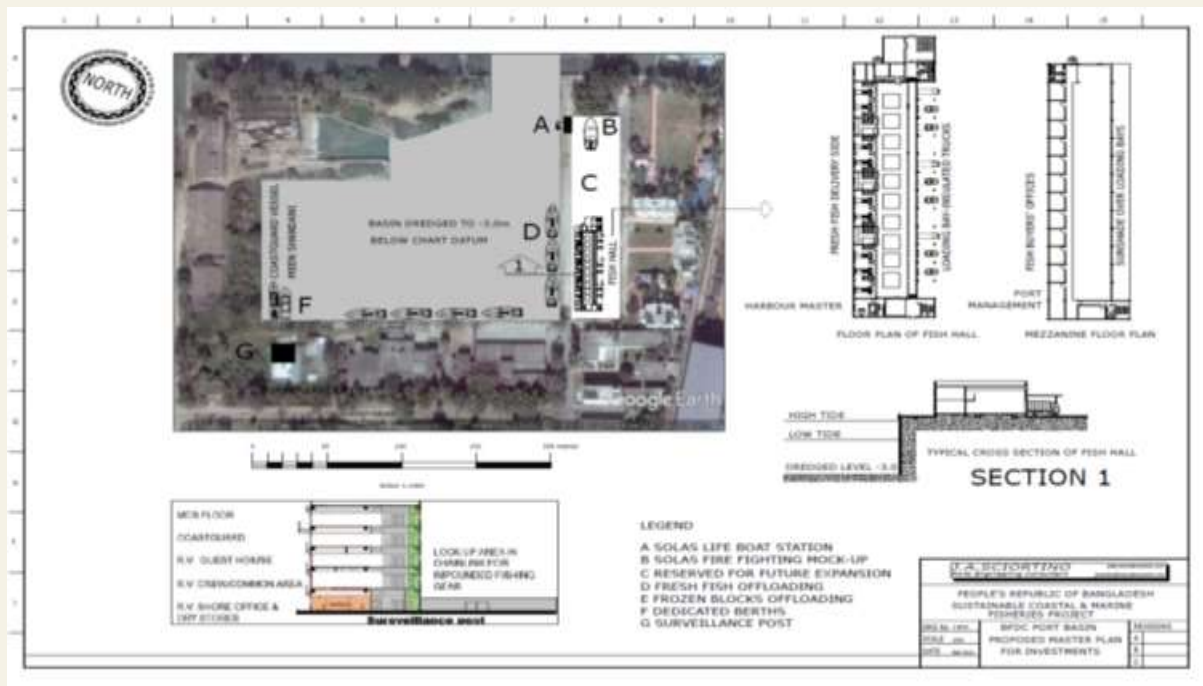
Hazrat Shahjalal International Airpor, Dhaka

INTERIOR WORKS

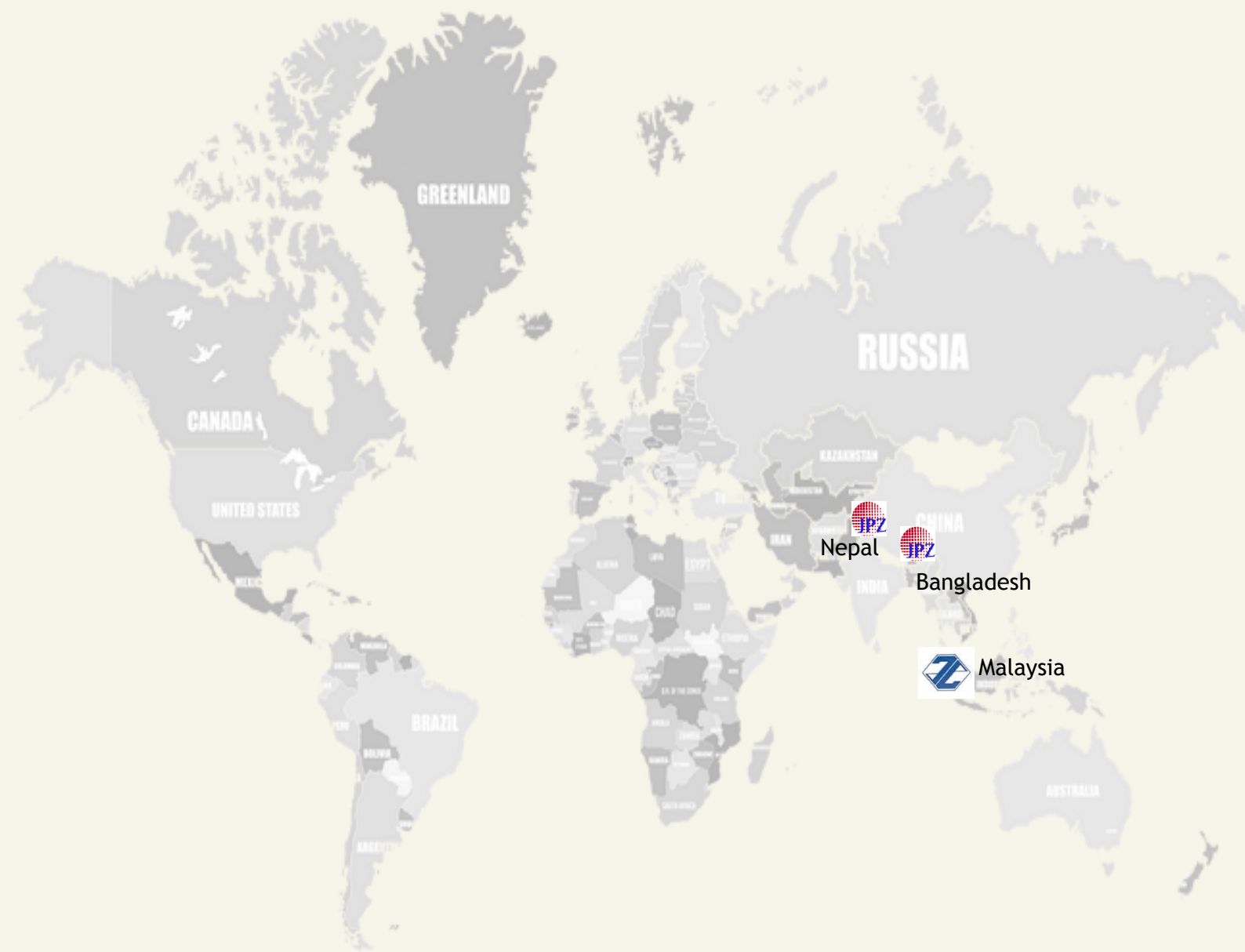


Detail Design & Supervision of Rajshahi City Corporation Auditorium

COSTAL MARINE & FISHERIES



Construction Supervision & Management Sustainable Coastal and Marine Fisheries Project.
(Phase-I,II)



Corporate Office:

"Dream" 2/4, Level-5, Flat-5B, Block-A, Mohammadpur Housing Estate,
Mirpur Road, Dhaka-1207, Bangladesh
Tel: +88-02-48111780, +88-02-8142421,
E-mail: jpzbdLtd@gmail.com, info@jpzbd.com, Website: www.jpzbd.com